

# Fixed castor EDDF 250 ESK

Extra Heavy Duty Series EDD - Wheel ES

-30 °C - +80 °C

+++  
swivels easily

++  
wear resistant

+++  
shock proof

+++  
floor protective

++  
weather proof

## Wheel



Tread: vulcanized elastic solid rubber tyre 73±5 Shore A

Wheel Center: Strong steel welded construction - zinc plated

## Fork



For applications where a super strong and durable caster is required,  
one tapered roller and one axial ball bearing,  
dust protection ring,  
very strong integrated Kingpin,  
locked nut, grease nipple, wheel axle bolted,  
finish – painted

Fixed castor Wheel-Ø A x width B mm: 250x100

Load Capacity kg: 1000

Load capacity tested according to EN 12530 and EN 12527

Overall height H mm: 323

Dimension of top plate TP 255x205 mm:

Hole spacing HS mm: 210x160

Hole-Ø HD mm: 17

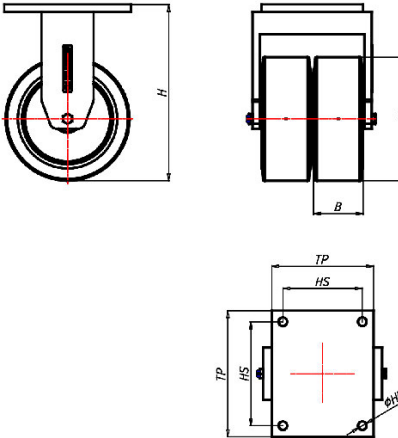
Wheel bearing: Ball bearing

## Advantages

- ✓ excellent running performance
- ✓ low rolling resistance
- ✓ silent in motion
- ✓ high abrasion resistance
- ✓ high load capacity

©Copyright 2024 Rollenbau GmbH, www.rollenbau.at 20.05.2024

ROLLENBAU



## Applications

- Heavy duty dollies
- Trash container trucks
- Machinery moving dollies
- Racks